

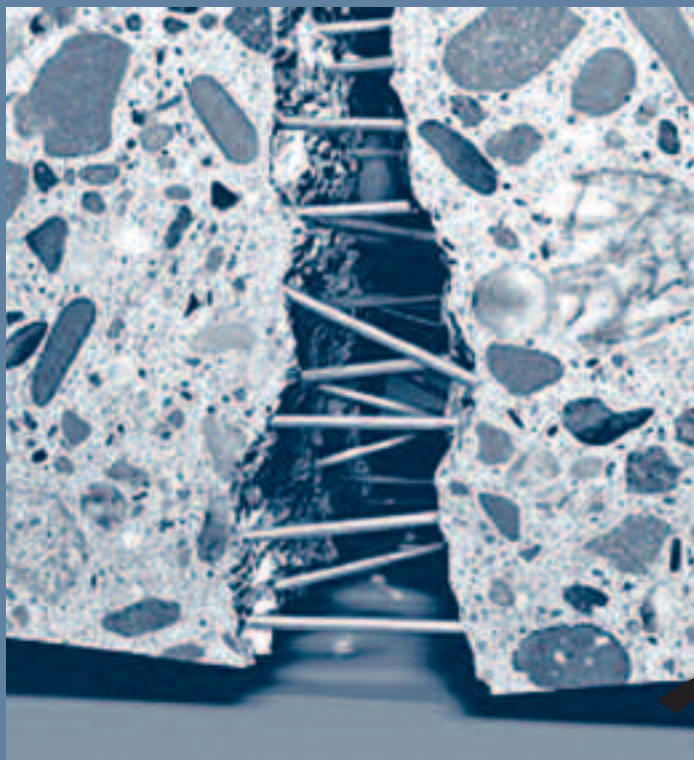
Guide to Good Practice

**DEUTSCHER BETON- UND BAUTECHNIK-VEREIN E.V.**  
**GERMAN SOCIETY FOR CONCRETE AND CONSTRUCTION TECHNOLOGY**

Concrete Technology

Steel Fibre Concrete

Edition October 2001



**Bau  
Kompetenz  
im Dialog**

**DEUTSCHER BETON- UND  
BAUTECHNIK-VEREIN E.V.**

DBV-Guide to Good Practice  
**Steel Fibre Concrete**

Edition October 2001

Original version: "DBV-Merkblatt Stahlfaserbeton" (German)

Editor:

German Society for Concrete and Construction Technology  
(Deutscher Beton- und Bautechnik-Verein E.V. – DBV)  
Kurfürstenstrasse 129  
10785 Berlin  
GERMANY

© DBV, Berlin, 2001/2007

This Guide to Good Practice is a translation of the German publication "DBV-Merkblatt Stahlfaserbeton". In the event of any discrepancy between the German text and the English translation, the German text shall prevail.

Cover picture:  
Steel fibre concrete after testing

Courtesy:  
CEMEX Deutschland AG  
Daniel-Goldbach-Strasse 25  
40880 Ratingen  
GERMANY

# Contents

	Page
Preface .....	6
1 Scope .....	7
2 Terms, definitions, notations.....	10
3 Materials .....	12
3.1 Constituent materials.....	12
3.1.1 Cement.....	12
3.1.2 Aggregates.....	12
3.1.3 Mixing water.....	12
3.1.4 Concrete admixtures and additives.....	12
3.1.5 Steel fibres.....	12
3.1.6 Reinforcing steel.....	13
3.2 Concrete mix design and production.....	13
3.2.1 Mix design calculation.....	13
3.2.2 Flowing concrete.....	13
3.2.3 Production.....	13
3.3 Steel fibre shotcrete.....	13
3.4 Properties of steel fibre concrete.....	14
3.4.1 General.....	14
3.4.2 Fresh concrete properties.....	14
3.4.3 Strength and deformation behaviour.....	14
3.4.4 Corrosion behaviour.....	15
3.4.5 Thermal and electric conductivity.....	16
4 Design values.....	16
4.1 Compressive strength and modulus of elasticity.....	16
4.2 Flexural tensile strength.....	16
4.3 Equivalent flexural tensile strength.....	16
4.4 Tensile strength.....	17
4.5 Deformation properties.....	18
4.6 Stress-strain curves for non-linear structural analysis.....	18
4.7 Stress-strain curve for cross-section design.....	19
5 Specification.....	19
5.1 General.....	19
5.2 Deformation areas.....	20
5.3 Fibre concrete classes.....	20
6 Safety concept.....	22
6.1 Basic considerations.....	22
6.2 Components subject to building legislation.....	23
6.2.1 Safety factors for verifications in the ultimate limit states.....	23
6.2.2 Safety factors to verify a locally reduced fibre effect.....	23
6.3 Components subject to water legislation.....	24
6.4 Components with a low risk potential.....	24

7	Methods for structural analysis	25
7.1	General	25
7.2	Linear-elastic analysis	26
7.3	Linear-elastic analysis with redistribution	27
7.4	Non-linear analysis	27
7.5	Methods according to the theory of plasticity	28
7.6	Beam-shaped components and walls under axial compression (second order theory)	28
8	Design	28
8.1	General	28
8.2	Verifications in the ultimate limit states	29
8.2.1	Bending with and without axial force and axial force alone	29
8.2.2	Shear resistance	34
8.2.3	Torsion	38
8.2.4	Punching	39
8.2.5	Design with strut-and-tie models	41
8.3	Verifications in the serviceability limit states	41
8.3.1	Stress limitation	41
8.3.2	Crack control	41
8.3.3	Deformation control	43
8.4	Verification of locally reduced fibre effect	43
8.5	Design of components subject to water legislation	44
8.6	Design of components with a low risk potential	44
8.7	Components under fire exposure	45
8.7.1	Verification of the fire resistance class	45
8.7.2	Temperature-depending post-crack tensile strength of the steel fibre concrete	45
8.7.3	Simplified verification of the fire resistance class	46
9	General detailing rules	47
9.1	Dimensions, bar spacing, non-structural reinforcement	47
9.2	Reduction of restraint and residual stresses	47
9.3	Working and expansion joints	48
9.4	Concentrated load areas	48
9.5	Steel fibre concrete surfaces	49
10	Rules for execution	49
10.1	General	49
10.2	Transport and placing	51
10.2.1	Ready-mixed and site-mixed concrete	51
10.2.2	Transport and casting of steel fibre shotcrete	52
10.3	Curing of the concrete	52
11	Quality control	52
11.1	General	52
11.2	Initial tests in accordance with DIN EN 206-1/DIN 1045-2 and performance tests, respectively	52
12	Tests to determine the tensile strength	54
12.1	Manufacturing of the test specimens	54
12.2	Storage	55

12.3 Preparation for the test .....	55
12.4 Testing device .....	55
12.5 Conduction of the test .....	56
12.6 Determination of the flexural tensile strength .....	56
12.7 Determination of the equivalent flexural tensile strength.....	57
Annex A Steel fibre concrete at the application of DIN 1045:1988-07 [R6] .....	62
Annex B Numerical example .....	68
References .....	77